

TLC IMAGING

With Doc-It® Imaging Systems

Doc-It Systems for Thin Layer Chromatography (TLC) imaging applications include the ChromaDoc-It and MultiDoc-It Systems. These low-cost colour imaging systems enable simple, accurate and repeatable quantitative determination of TLC plates.

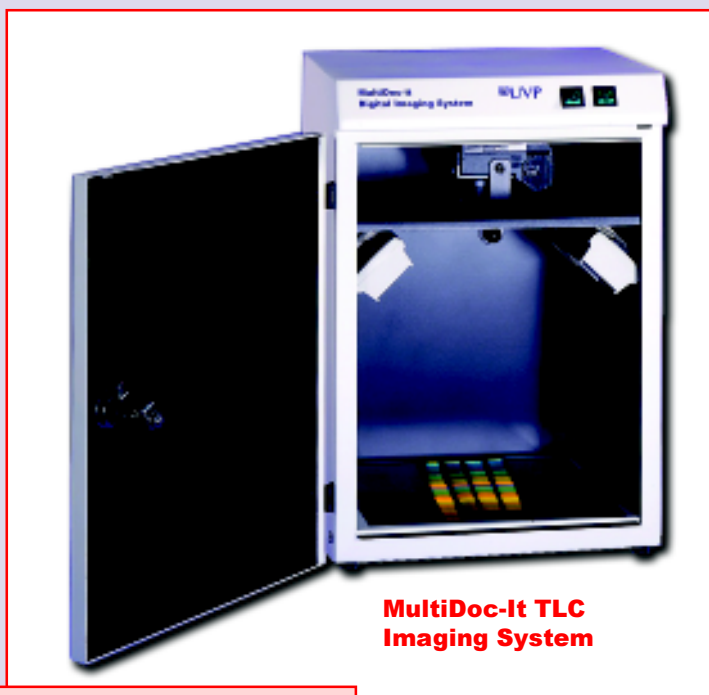
UVP's ChromaDoc-It and MultiDoc-It Systems feature a high-quality mega pixel, colour digital camera mounted on uniquely designed cabinets. The small footprint housing of the ChromaDoc-It incorporates high intensity 15-watt overhead ultraviolet illumination of shortwave (254nm), longwave (365nm) and white/visible light (400-750nm). The MultiDoc-It has white light plus two 4-watt UV lamps for overhead illumination. The UV lamps are removable for other applications.

TLC Imaging. Whether a coded TLC plate or pencil marker is used, identification details are visible under the UV light. The details are recorded with each image. A unique colour filter, specifically designed to enable the acquisition of TLC images, is included to ensure dazzling colour results every time.

Image Capture. Once illuminated, the TLC plate is photographed by controlling the camera from the Doc-It Acquisition Software which is loaded onto your computer. The software acquires an image using user-defined capture templates. An image can then be adjusted for brightness or contrast and annotated before printing. Other software manipulation features include zoom, pan, sharpen, blur, emboss, rotate and despeckle. Pseudo colours can also be added to the image for publication. The measurement tool directly displays Retardation factor (R_f)

MultiDoc-It TLC Imaging System features a durable metal housing and overhead UV.

- Sturdy metal darkroom for high usage laboratories
- Overhead white light (400-750nm)
- 254/365nm 4-watt UV lamps are removable for use in other applications
- Mega pixel digital colour camera mounts inside the darkroom
- Full access door; UV light is off when the door is open, protecting users from UV exposure



MultiDoc-It TLC Imaging System

System benefits include:

- Repeatable and objective results
- Colour images can be produced in seconds
- Camera be removed for other applications
- Image enhancement for perfect image presentation
- Measurement tool displays R_f values
- Image history ensures that images adhere to GLP regulations
- Image properties and user comments are stored along with the image
- Compact footprint for limited laboratory space

values. Alternatively use the Doc-It 1D Analysis Software to calculate the R_f values.

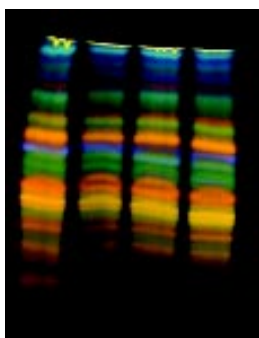
Image History and Reports. All manipulations performed on images are stored in the image history files along with any notes and important details the user wishes to record. The history file remains attached to the image and cannot be erased. These files can be printed and are designed to eliminate fraudulence in accordance with GLP. Multiple report formats can be created. The Qwik-Link icon can be programmed to open any software for image analysis or presentation.



ChromaDoc-It TLC Imaging System

ChromaDoc-It TLC Imaging System with high intensity UV

- Chromato-Vue® cabinet features high intensity 15-watt 254nm and 365nm UV lamps built into the cabinet
- Overhead white light
- Mega pixel digital colour camera
- Lightweight access curtain blocks ambient light



Ginkgo Biloba illuminated with 365nm UV



Nutmeg Oil illuminated with white light

Connect the Doc-It Camera and Software to your existing computer for easy to use capture, enhancement, documentation and presentation of your TLC images!



Camera Specifications

Specifications listed are for the camera when it is connected to the Doc-It Software. Additional camera functions are available when camera is not connected to the software (see below).

File Formats: jpeg, bmp, tif, gif, tga, png
 CCD: Mega pixels
 Filters: TLC Filter & Diopter
 Image Resolution: 640x480, 1024x768, 1280x960, 2048x1536

Image Compression: Yes, high and low

Lens: 3x optical zoom; 46mm threads for optional optics/filters

Focus: Automatic

Zoom: 15x with 3x optical zoom; (35-105mm 35mm equiv.)

Focal Distance: 12.5"

Exposure: 1/800 to 16 seconds

Tripod Mount: Yes, standard

Interface: USB

Operating System Windows
 Compatibility: 98, 2000, ME, XP

Power: Extended Life V3 Lithium Batteries and AC Adapter

Camera Dimensions: 4.3"W x 3"D x 2.7"H
 (109 x 76 x 69 mm)

Camera Weight: 307 g

Note: Additional camera functions are available when the camera is not connected to the software/computer. Features include:

- Multi-mode exposure controls
- 1.8" wide-view colour LCD monitor
- Variable shutter speeds and flash controls
- QuickTime Movies
- Smart Memory Card
- Utility and photo software
- Video output cable



Damiani & Burdock
illuminated with 365nm



Boldo illuminated
with white light



MultiDoc-It TLC System. Use your existing computer with Doc-It's intuitive, easy to use software for capture and publication of TLC images.

Doc-It Image Acquisition Software

The Doc-It acquisition software, included with the systems, allows capture of quality, high resolution images. Doc-It offers many features for enhancing image output:

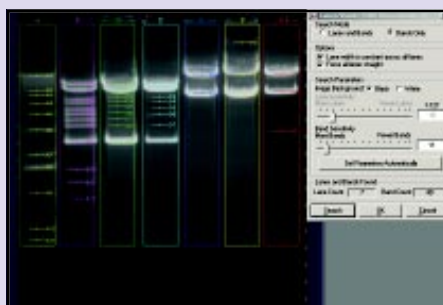
- Measurement tool for determining R_f values
- Multiple image resolution settings
- Colour and monochrome
- Over and under image saturation warnings
- Preset zoom with sample sizes
- Automatic and manual focus
- Automatic exposure and lens modes
- Templates for multiple users and experiments
- Basic and advanced capture modes
- Multiple file format compatibility

Doc-It 1D Analysis Software

Doc-It Software (order separately) provides easy-to-use 1D analysis of TLC images.

- Generate easily interpret quantitative data
- Calculate Retardation factor values
- Produce detailed and configurable reports with complete analysis results
- Track image and analysis history including image properties and user comments

Doc-It 1D Analysis Software 89-0190-01



System Specifications

MultiDoc-It TLC System 97-0108-13 (115V)
 97-0108-14 (230V)

Doc-It digital colour camera, Doc-It capture software, TLC filter & diopter, universal voltage power supply for camera, darkroom enclosure with overhead white light

Darkroom: 17.75" W x 12"D x 16.6"H
 (451 x 305 x 422 mm)

UV Lamps: 4-Watt, 254nm/365nm UV
 Maximum Image: 21 x 26 cm

ChromaDoc-It TLC 97-0105-01 (115V)
 97-0105-02 (230V)

Doc-It digital colour camera, Doc-It capture software, TLC filter & diopter, universal voltage power supply for camera, cabinet enclosure with overhead white and UV light

Cabinet: 19.75" W x 16.5"D x 15.75"H
 (502 x 419 x 400 mm)

UV Tubes: 15-watt 254nm/365nm UV
 (2 each)

Maximum Image: 20 x 40 cm

The cabinet includes a soft rubber viewport for viewing samples in other applications



ChromaDoc-It TLC Imaging System



Printers

Optional digital printers provide dye sublimation colour or 256 grey scale for high resolution, archive-quality prints.

Printer, Monochrome, Mitsubishi
 89-0069-06 (115V)
 89-0069-07 (230V)

Printer, Monochrome, Sony (Europe)
 89-0069-15 (230V)

Printer, Dye Sub Colour and Monochrome, Mitsubishi
 Call UVP



UVP

Corporate Headquarters: UVP, Inc. 2066 W. 11th Street,
 Upland, CA 91786 Tel: (800) 452-6788 or (909) 946-3197
 Fax: (909) 946-3597 • E-Mail: uvp@uvp.com

European Sales Office: Ultra-Violet Products, Ltd.
 Unit 1, Trinity Hall Estate, Nuffield Rd, Cambridge CB4 1TG, UK
 Tel: +44(0)1223-420022 Fax: +44(0)1223-420561
 E-Mail: uvp@uvp.co.uk

For more information contact: